

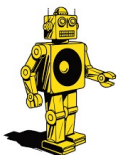
Robomagic Live – Badminton Estate

Car Par & Traffic Management Plan

Location: Badminton Estate, Worcester Lodge Entrance, Didmarton, Badminton, GL9 1ED

Prepared by: Stadium Traffic Management Limited

Version 3



Contents

Contents..... 2

Current Distribution List..... 3

 Version Control 3

 Stadium Overview..... 4

Events Overview 6

 Event Timings..... 6

 Event Attendance..... 7

Site Overview 7

Site Map 8

Command & Control 9

Communication..... 9

Traffic Management Overview 10

Routing Strategies..... 27

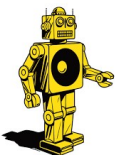
Car Park Management Overview 31

 Car Park Venue Strategy 44

Staffing Strategy..... 47

Contingency Planning 50

TTRO Applications..... 52

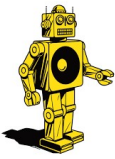


Current Distribution List

Name	Organisation	Job Title	Role In TMP	Email Contact
Carl Taylor	Stadium	Managing Director	Author of TMP	c.taylor@wearestadium.com
Victoria Hazell	The Event Umbrella	Operations Manager	Representative for Robomagic	Vic@theeventumbrella.com
Gus Corcoran	The Event Umbrella	Managing Director	Representative for Robomagic	Gus@theeventumbrella.com
James Nicklin	The Event Umbrella	Site Ops Manager	Representative for Robomagic	James@theeventumbrella.com
TBC	Badminton House		Venue Owner	
TBC	Gloucestershire Highways		Approver of TMP	
TBC	Wiltshire Highways		Approver of TMP	

Version Control

Date	09/03/2023	17/3/2023	31/3/2023
Version	V1-Draft	V2 – Draft	V3- Draft
Author	Carl Taylor	Carl Taylor	Carl Taylor
Authorization	Stadium TM	Stadium TM	Stadium TM



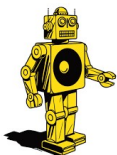
Stadium Overview

Stadium serves its clients with one goal in mind – keeping people safe. This is a goal we consistently achieve through the key parts of our business: Traffic & Car Park Management, Event Services, Safety and Security Training, and Hostile Vehicle Mitigation (HVM) Rental Solutions. We tailor all of these services to our clients' wishes, which range from football clubs and music festivals through to local authorities and foreign officials.

Stadium was founded as StadiumTM in 2009, specialising in Traffic Management services for football matches and other live events. We realised the traffic generated by fans approaching a stadium to attend an event could be managed more professionally to ensure a more enjoyable and safer experience for everyone.

Our first successful pitch was to Burnley FC, and Stadium's services were put to the test against Leeds United in a friendly in August 2009.

Since then, we have expanded dramatically, and currently provide a range of services to 18 clients across the UK and International events industry including:



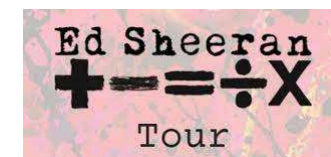
Robomagic Live-Badminton Estate -Traffic Management Plan

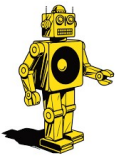


Stadium	Years Active	Security	Stewarding	Traffic Management	HVM
Anfield Stadium Concerts	2012 - Present	✓	✓	✓	
Aston Villa Training Ground	2017 - 2020	✓ (24/7)			
Birmingham 2022 Commonwealth Games	2021 - 2022	✓	✓	✓	
Burnley FC	2009 - Present	✓	✓	✓	✓
Burton Albion FC	2012 - 2021	✓	✓		
Chelsea FC	2021 - Present	✓	✓		
Cheshire Oaks	2018 - Present		✓		
Coventry Diwali Parade	2018 - 2019	✓	✓	✓	
Coventry Godiva Festival	2021	✓	✓		
Coventry Godiva Festival	2015 - 2018			✓	✓
Derby FC	2012 - Present	✓	✓	✓	
Derby Parade	2017 - 2019	✓	✓		
Derbyshire Dales Matlock Illumination	2017 - 2019			✓	
Euros Denmark	2021				✓
Forestry	2022		✓	✓	
IKEA	2020 - 2022	✓			
Liverpool FC	2011 - Present	✓	✓	✓	✓
Manchester FC	2022 - Present		✓		
Merseyrail	2019 - Present		✓		
NFL London	2019 - Present	✓			✓
Operation London Bridge	2022	✓	✓		
Padiham Council	2019 - Present	✓	✓	✓	
Qatar World Cup 2022	2019 - Present	✓	✓		
Queens Tournament	2015 - Present				✓
Rugby World Cup 2015	2015	✓			
Silverstone Grad Prix	2020 - Present	✓			
Silverstone Moto GP	2020 - Present	✓			
St.Georges Park	2022 - Present	✓ (24/7)	✓		
Twickenham Stadium (RFU)	2020 - 2022	✓	✓		
Warwick University	2017 - Present	✓	✓	✓	
Watford FC	2021	✓	✓		
Wembley Stadium (The FA)	2020 - 2022	✓	✓		
DW Stadium	2021 - Present	✓	✓		
Wolverhampton Parade	2017 - 2019	✓	✓		
Wolverhampton Wanderers FC	2016 - Present	✓	✓		
Worcestershire Council	2019 - Present			✓	✓



Elton John





Events Overview

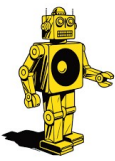
Robomagic live at is promoter of live music concerts in the UK & Europe. Robomagic Live are promoting both Rod Stewart & The Who across the UK at various events including The O2 London, Edinburgh Castle & Northampton Saints Stadium. For the purpose of this document, the following information is specifically related to the 2 concert nights at Badminton House.

Robomagic Live plan to promote 2 concerts over 2 separate event days

Date	Main Act
Sunday 2 nd July 2023	Rod Stewart
Sunday 16 th July 2023	The WHO

Event Timings

ACTIVITY	TIMINGS
Public Car parks Open	15:30
Arena Gates Open	16:30
Support/First act on Stage	18:30-20:30
Main Act on stage	21:00
Arena Bars Close	23:00
Site Clear	00:00



Event Attendance

Date	Main Act	Capacity
Sunday 2 nd July 2023	Rod Stewart	20,000
Sunday 16 th July 2023	The Who	20,000

Site Overview

Badminton Estate is located a short distance from Bristol, stadium has been contracted by the The Event Umbrella & Robomagic Live on to provide the Traffic Management and Car Parking Services for the above concerts being held at the venue during the summer of 2023.

For all these events Stadium will facilitate the production and installation of traffic management signage on local highway and management and parking of vehicle within the estate.

Stadiums primary responsibilities associated with delivery of this operation are detailed as follows:

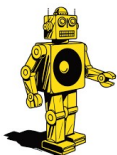
The maintenance of the public safety on the local and strategic highways infrastructure. This is the key aim and primary reason for detailed traffic management planning.

Public safety must always be protected, and the event must take all responsible, practical measures to ensure that the risk to life is minimized.

To minimize (where possible) disruption to all road users

Ensure that the public highway is, in as much as is practical, and kept clear of unnecessary congestion.

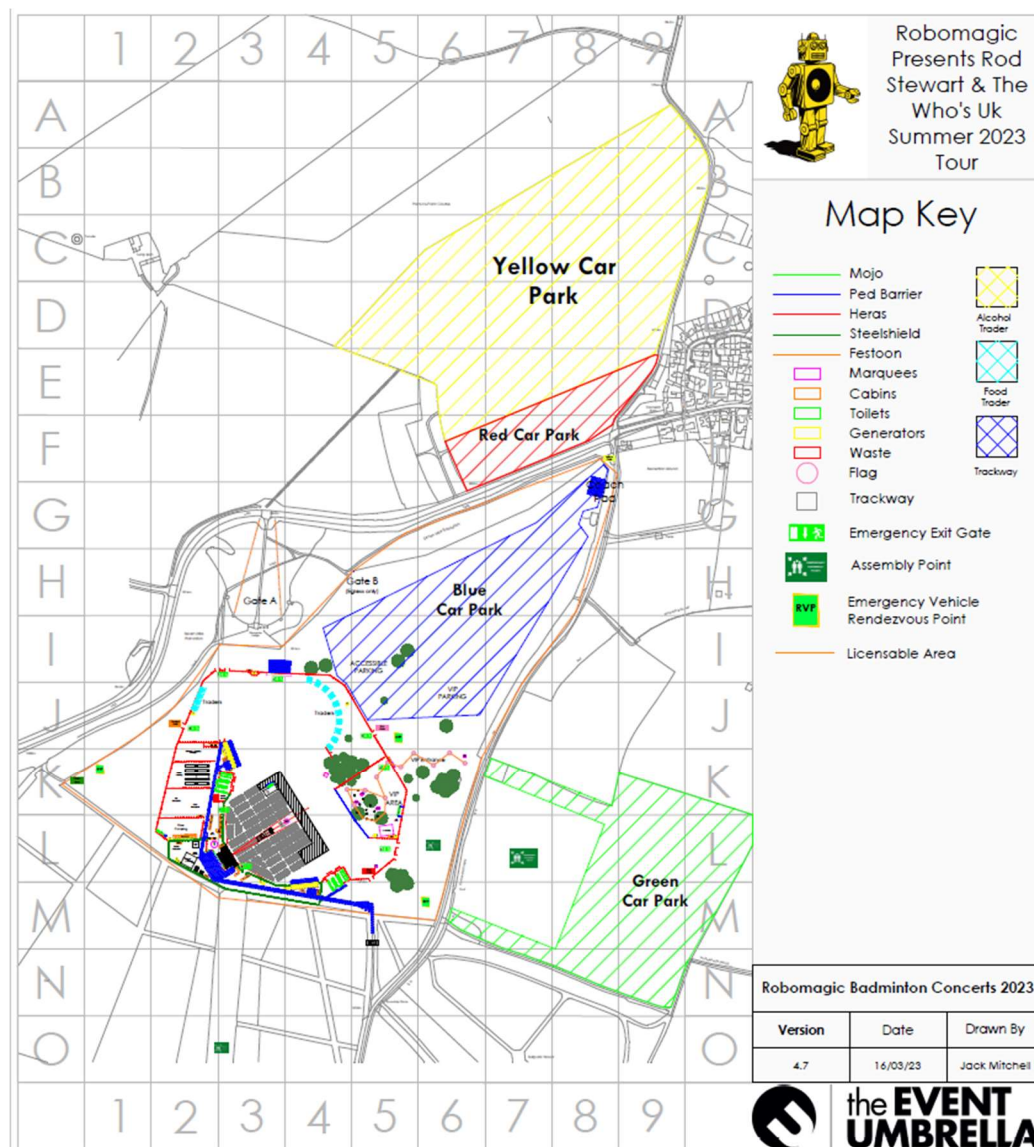
Facilitate the safe movement and parking of all vehicles on site.

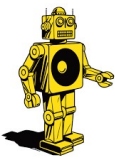


Robomagic Live-Badminton Estate -Traffic Management Plan



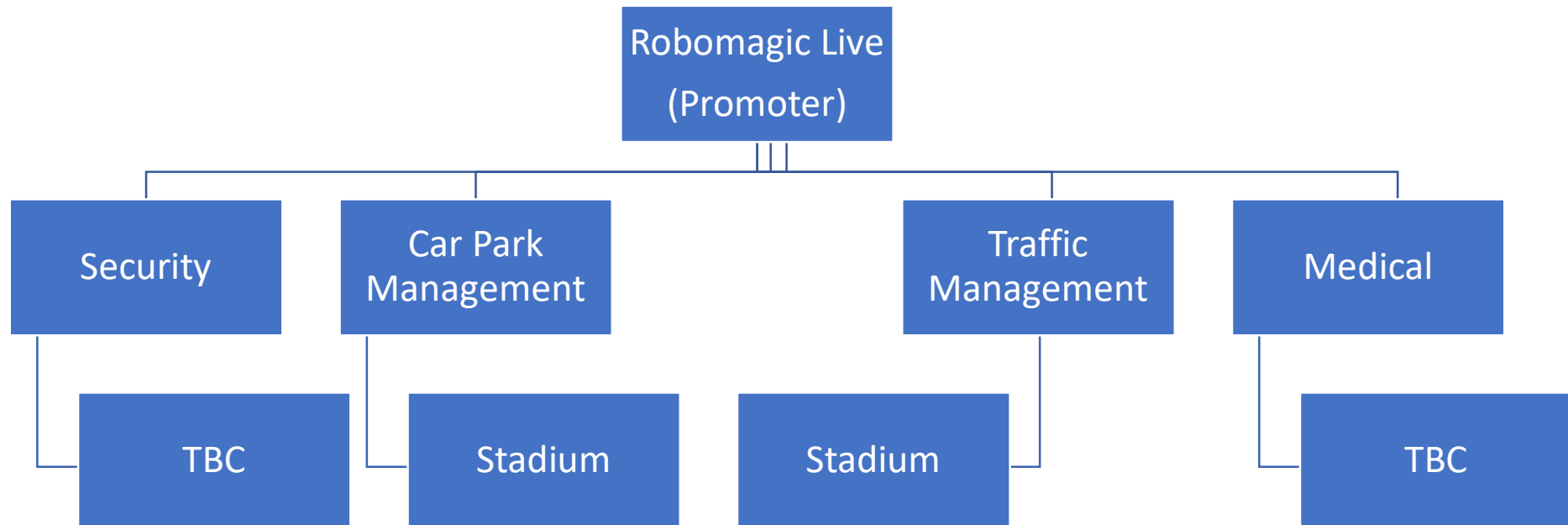
Site Map





Command & Control

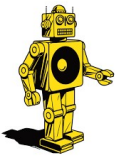
Throughout the event dates, the below command and control structure will be in place:



Communication

The Stadium External and Internal Operations Managers will collect 1 Client radio from The Event Umbrella, these will be collected from Event Control at approximately 12 noon on each event day.

This will enable radio contact with the appointed representative throughout the event. As a contingency the Stadium Operations Managers will also supply their mobile phone numbers to the Event Organiser, which would be kept fully charged and switched on for the duration.



The radios will be returned to Event Control at the end of each day for charging.

Stadium staff will utilise Stadium radios for communication throughout all the event days. The radios will be issued by the Stadium Operations Manager as deemed necessary depending on their level of responsibility and positions.

Traffic Management Overview

This document aims to outline the key areas of the traffic management plan for the Robomagic live event at Badminton House. The aim of the document is to ensure that the operation is methodical, compliant, and safe. And aims to minimize disruption as much as feasibly possible.

The aim of this document are as follows:

The maintenance of public safety on the local and strategic highways infrastructure. This is the key aim and primary reason for detailed traffic management planning.

Apply for appropriate speed restrictions.

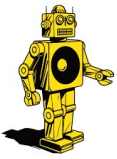
Public safety must always be protected, and the event must take all responsible, practical measures to ensure that the risk to life is minimized.

To minimize where possible disruption to all road users

Ensure that the public highway is, in as much as is kept of unnecessary congestion

Facilitate the safe movement and parking of all vehicles on site.

To adhere to the guidance set out in relation to the legislation under the new roads and street works 1991, the road traffic regulations act 1984 and highways act 1980



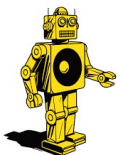
Chapter 12D M6 Operatives will place out wayfinding signage for both ingress/egress routes, reduced speed limits, no waiting cones and the external traffic management supervisor will maintain these throughout the event period.

Advance Warning Signage

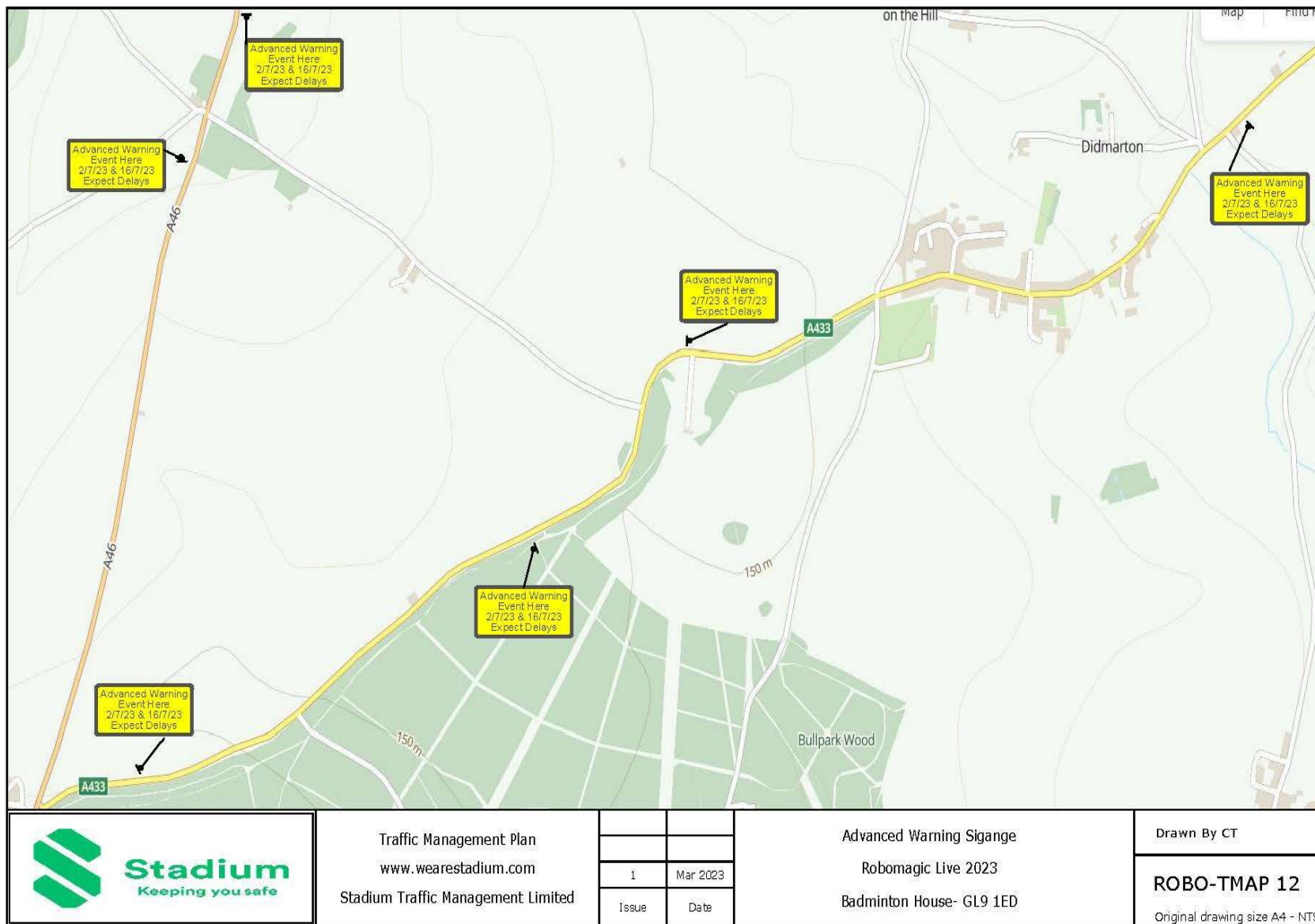
To ensure we have appropriately advised normal road users of the event and potential impact it may have on their journey, Stadium will install for advance warning signs on the A46 & A433

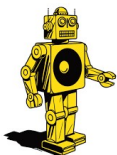
These signs will be placed a minimum of 14 days prior to the first event date to ensure we have advised the “Normal” road user. All signs will be removed 24hrs post last event.

The wording for these signs for 2023 will be as follows:

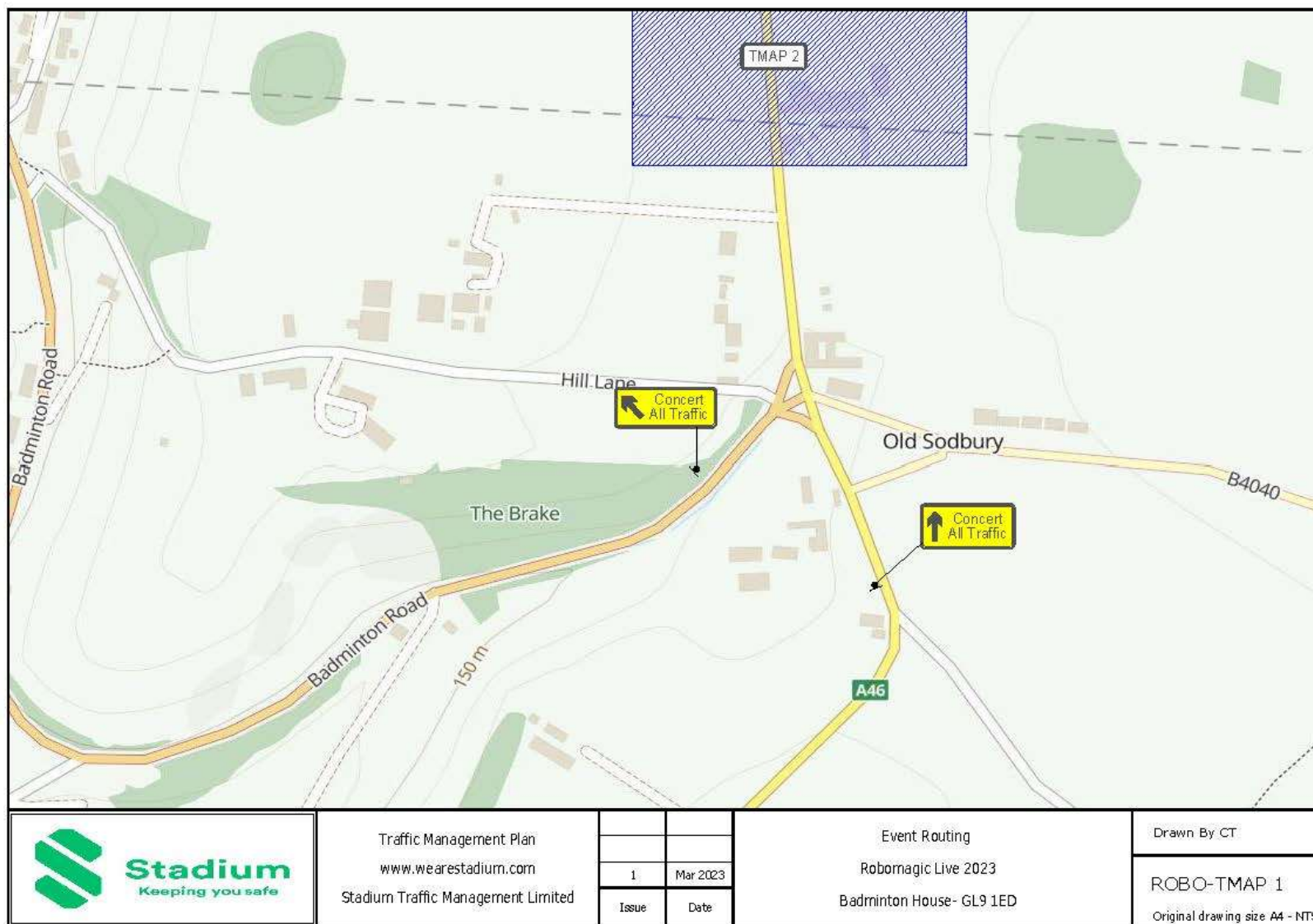


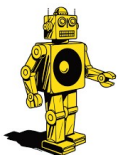
Robomagic Live-Badminton Estate -Traffic Management Plan





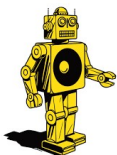
Event Directional Signage



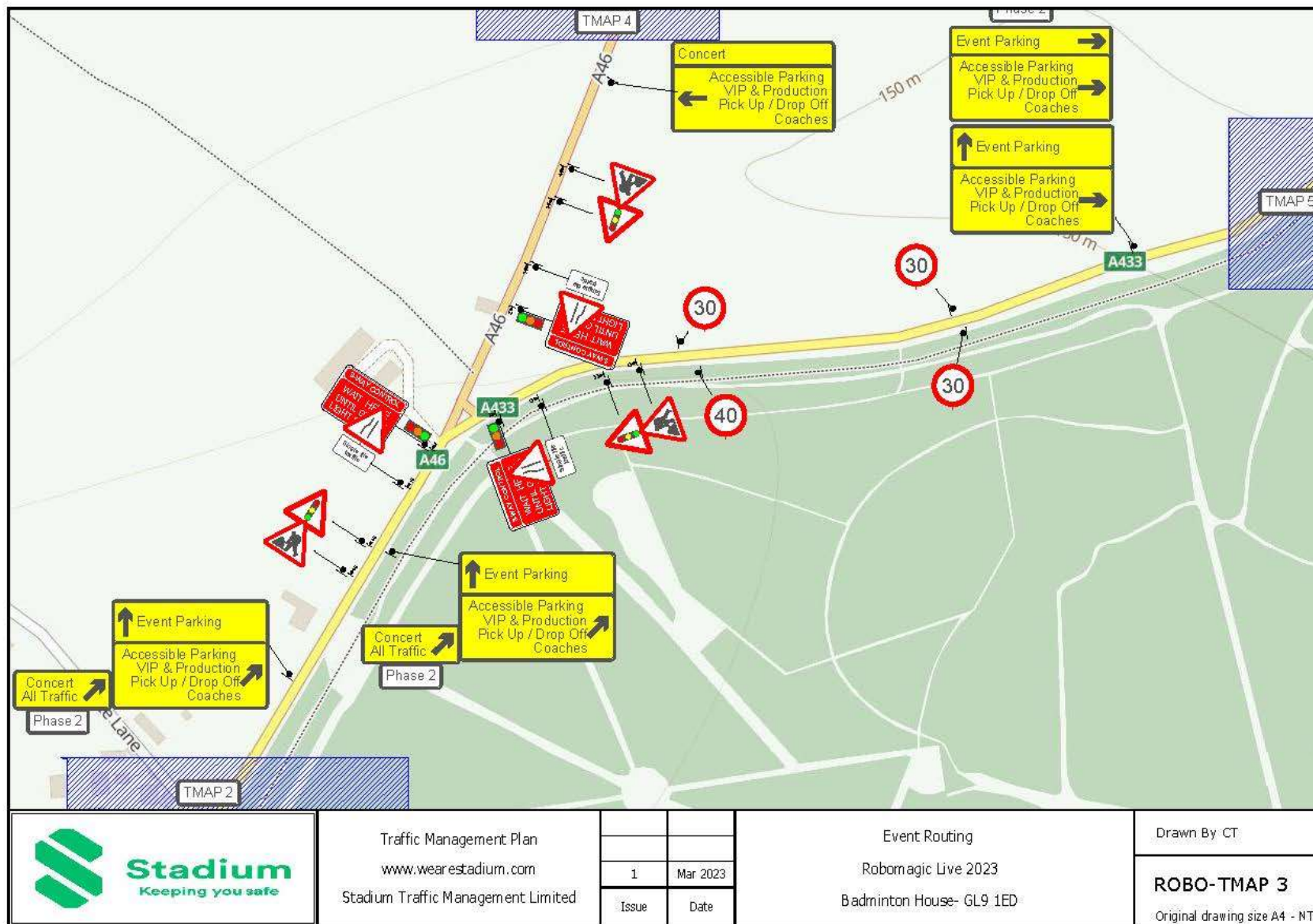


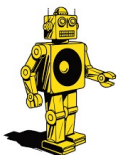
Robomagic Live-Badminton Estate -Traffic Management Plan



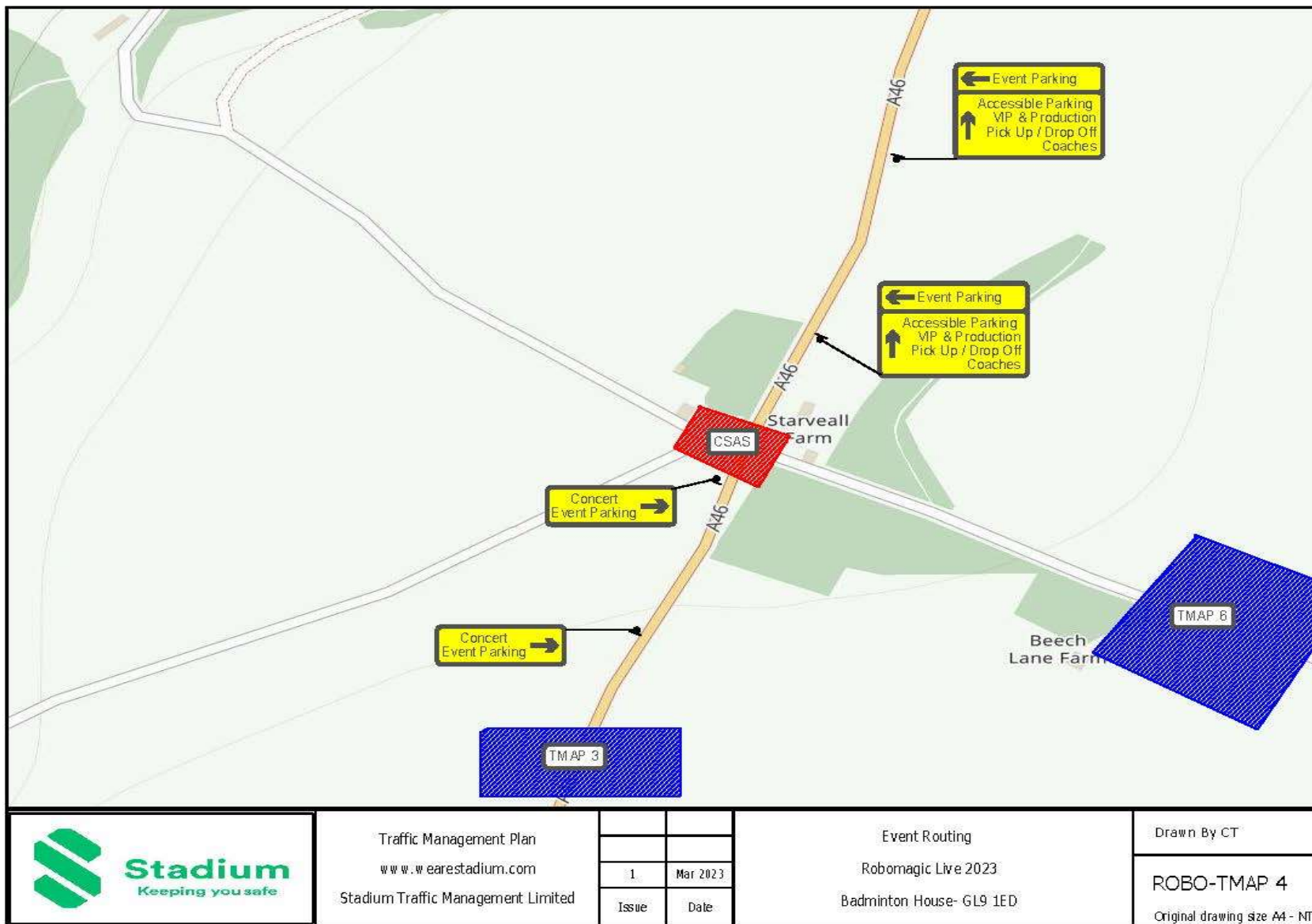


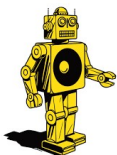
Robomagic Live-Badminton Estate -Traffic Management Plan



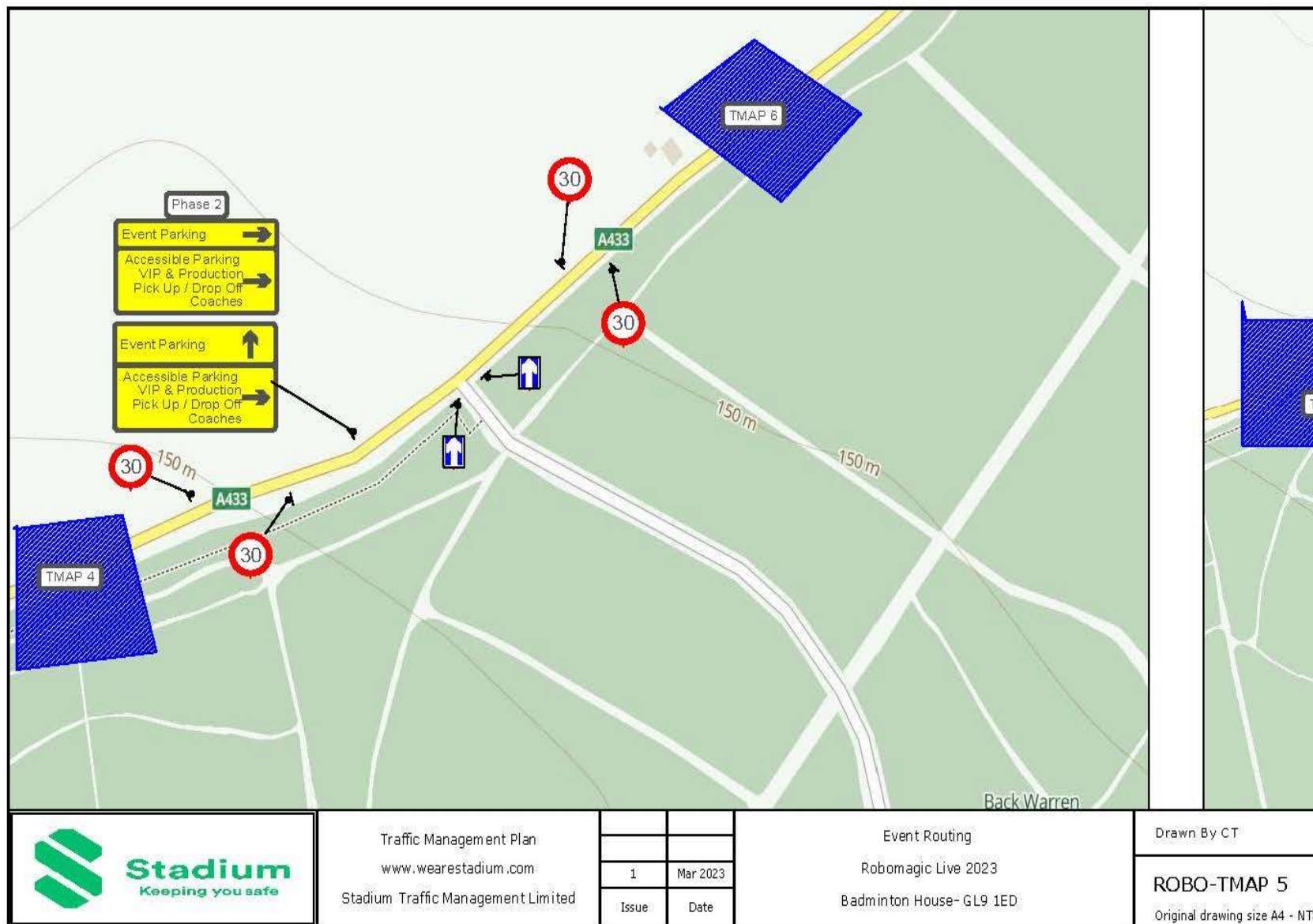


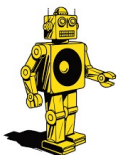
Robomagic Live-Badminton Estate -Traffic Management Plan



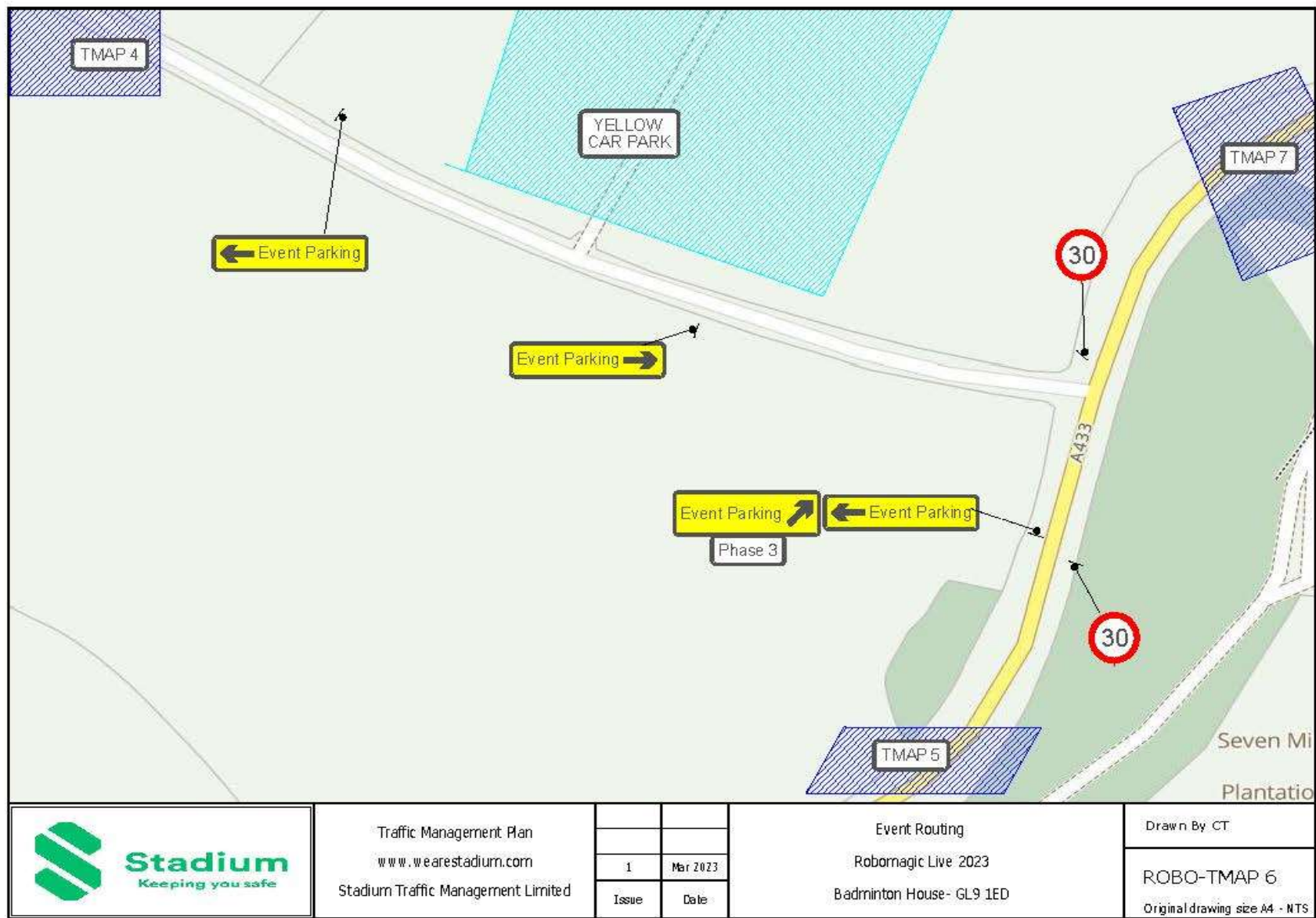


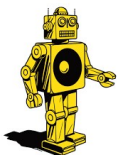
Robomagic Live-Badminton Estate -Traffic Management Plan



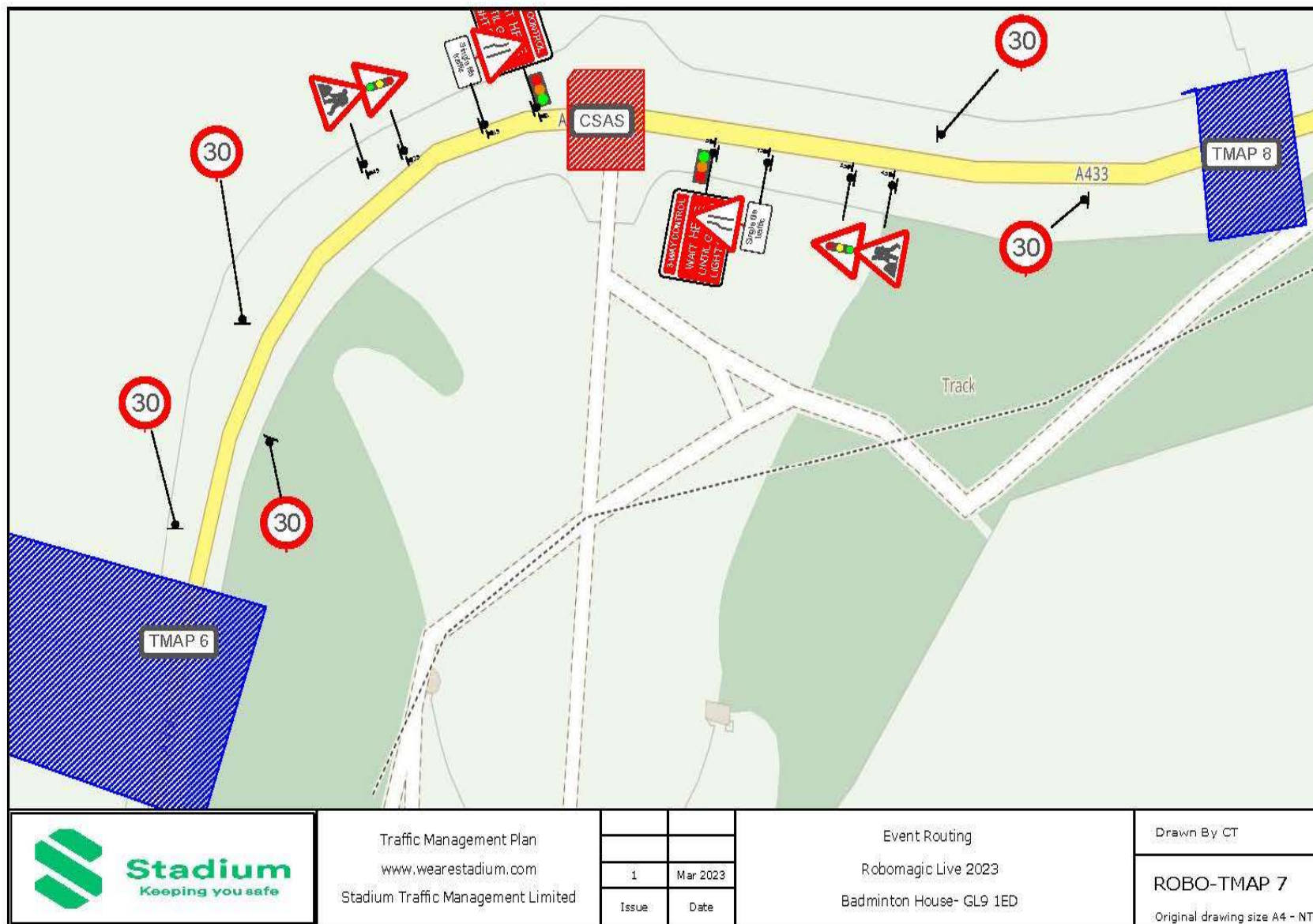


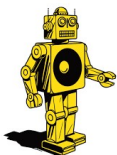
Robomagic Live-Badminton Estate -Traffic Management Plan



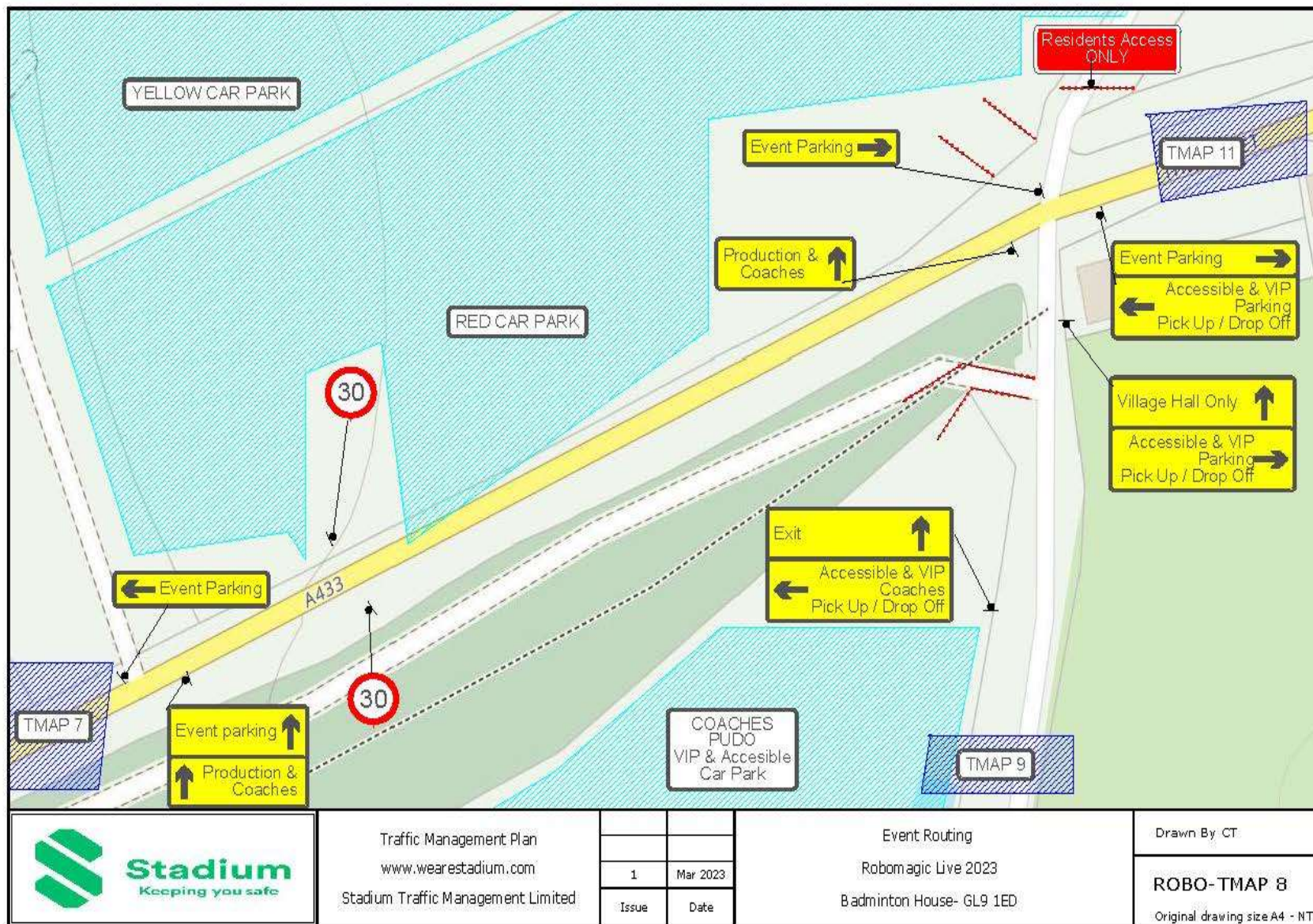


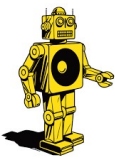
Robomagic Live-Badminton Estate -Traffic Management Plan



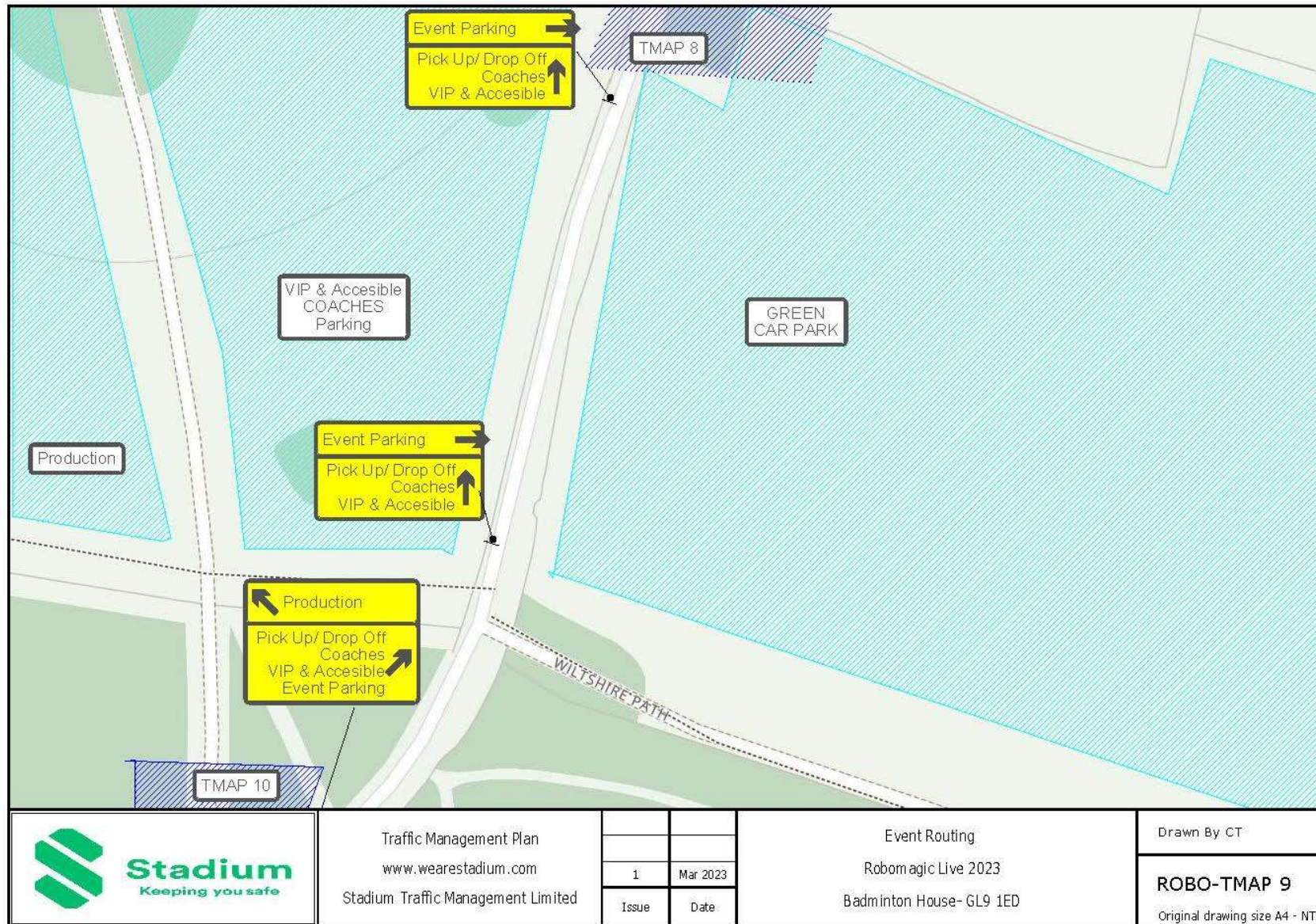


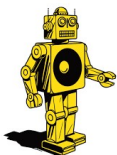
Robomagic Live-Badminton Estate -Traffic Management Plan



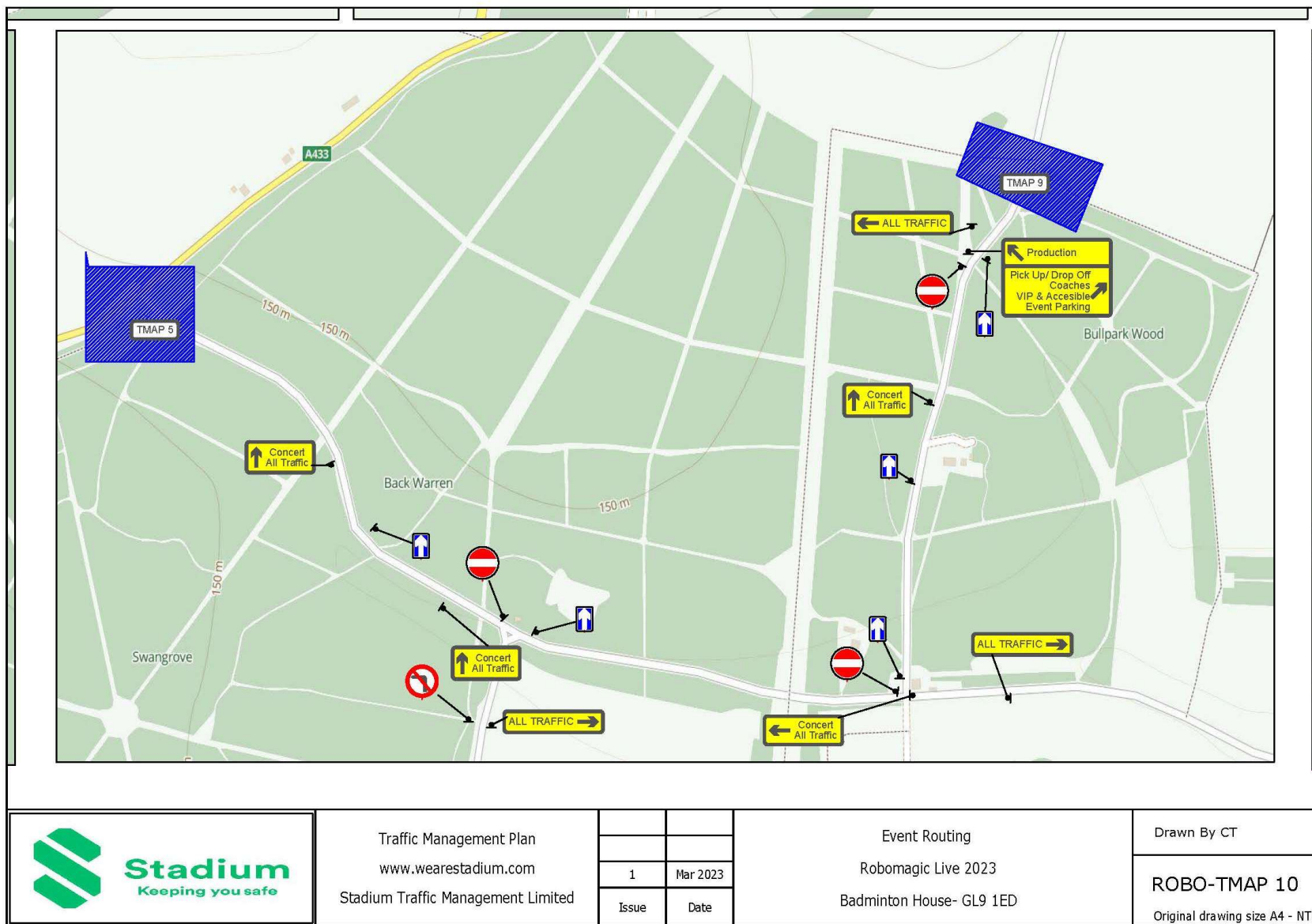


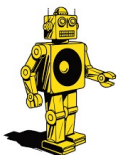
Robomagic Live-Badminton Estate -Traffic Management Plan



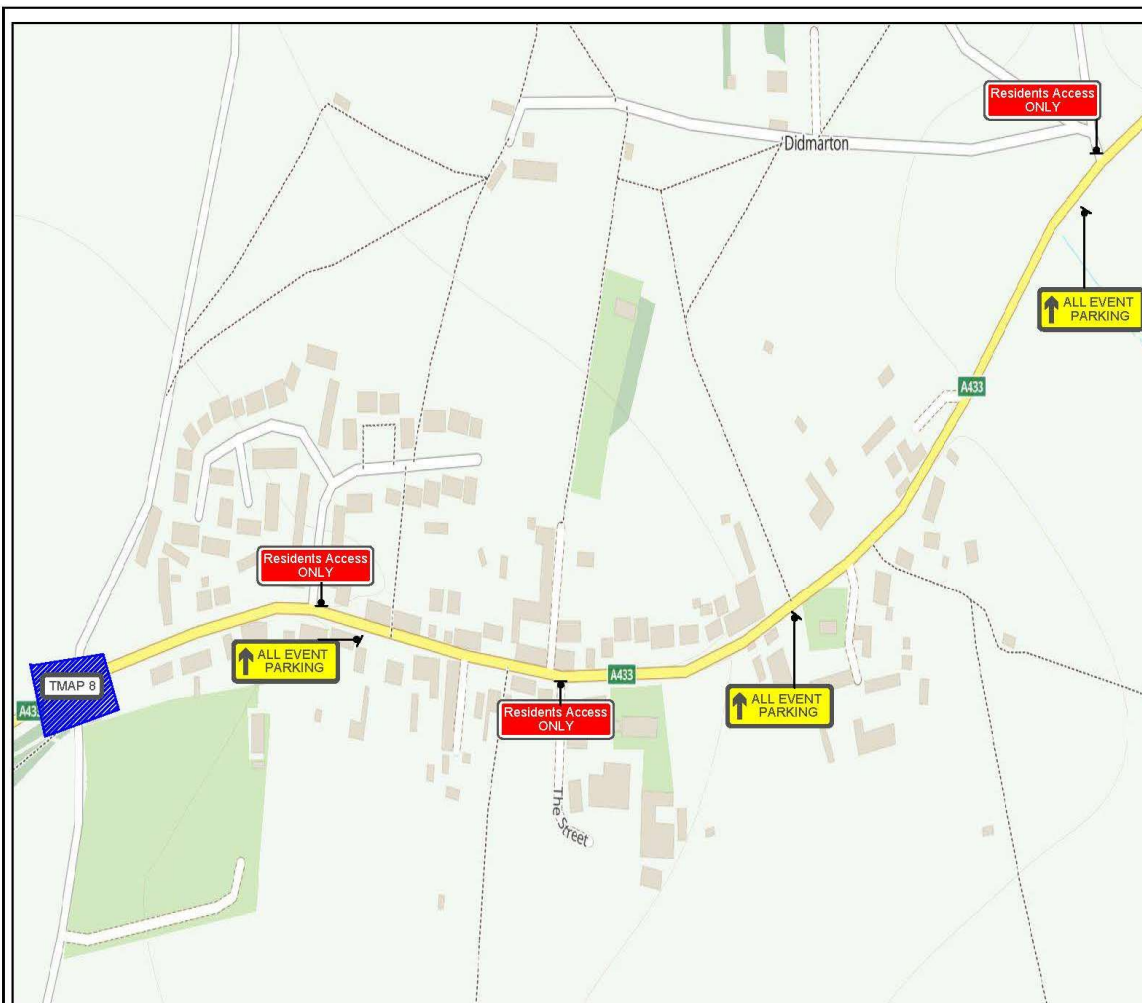



Robomagic Live-Badminton Estate -Traffic Management Plan

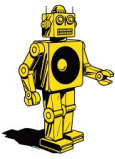




Robomagic Live-Badminton Estate -Traffic Management Plan



	Traffic Management Plan				Event Routing	Drawn By CT
	www.wearestadium.com					Robomagic Live 2023 Badminton House- GL9 1ED
	Stadium Traffic Management Limited		1	Mar 2023	ROBO-TMAP 11 Original drawing size A4 - NTS	
			Issue	Date		



Verge Protection & No Waiting Zone

A no waiting zone will be applied for to include the A433 at the junction of A46 to the junction of A433 & the ST, the distance of coning will be 3890M and spacing will be set at 15M apart requiring 520 no waiting cones.

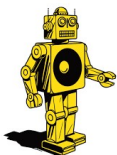
Particular attention will be paid to resident's driveways to ensure no parking is available in these areas and all cars follow for the main event.

The Traffic order will cover from Knockdown to the A46 with A433

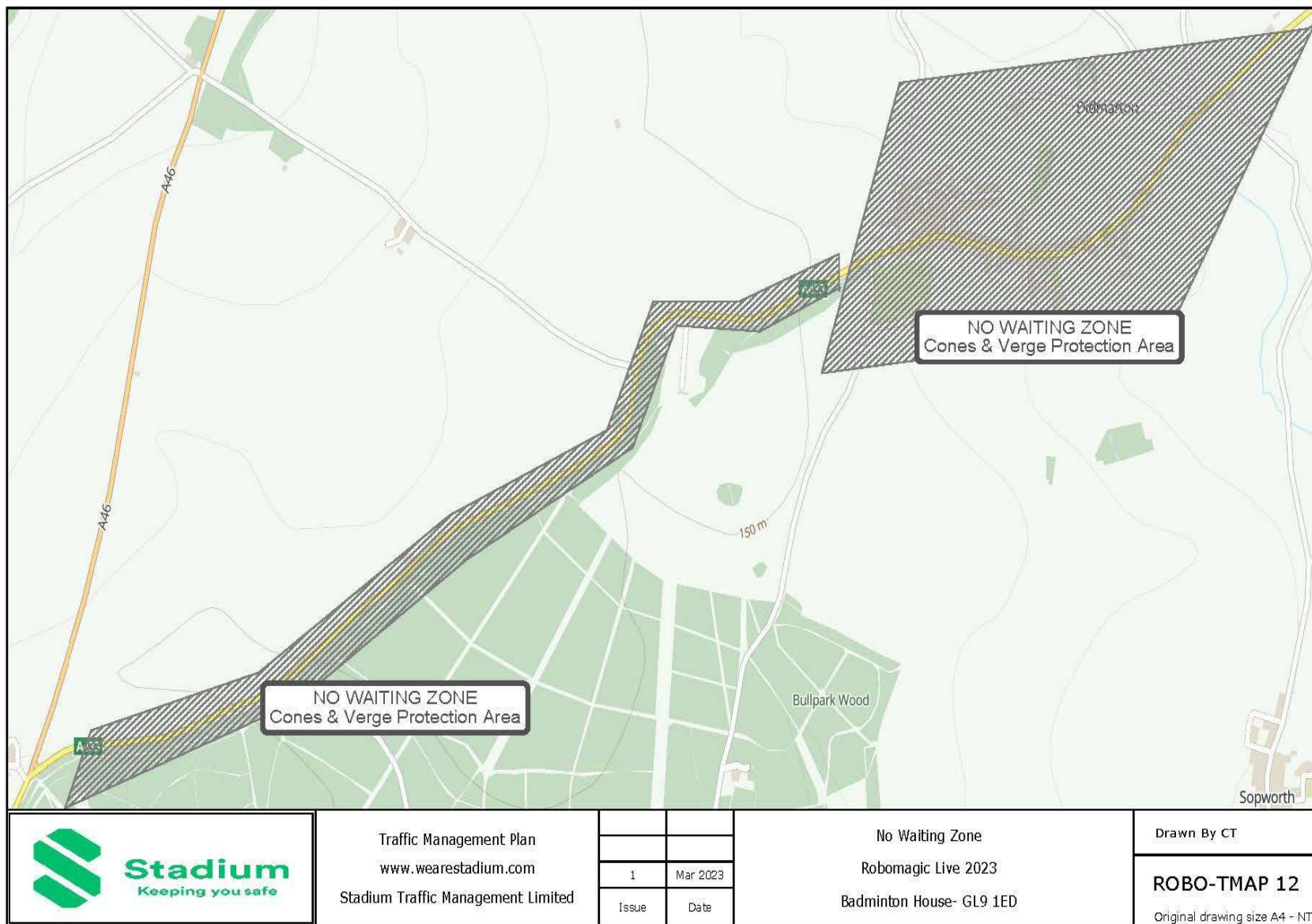
A steward will be deployed in Didmarton to prevent people parking in Didmarton and the surrounding area, they will be deployed to St Arlids where a "residents only" sign will be deployed.

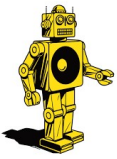
Sopworth Village

We will apply similar plans to Sopworth village to include a stewarding resident's access area. Chapter 8 signage stating "Residents Access Only" will be applied to either end of the village and no waiting cones will be added to the route.



Robomagic Live-Badminton Estate -Traffic Management Plan





Where needed the route will be pinned and tapped to prevent cars parking on verges alongside a non-enforceable no waiting zone with no waiting cones

Non-Event Emergency Traffic

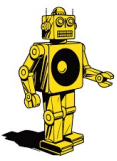
Any non-event emergency traffic will be assisted through the network, CSAS staff will be available to hold any traffic alongside any manually controlled traffic lights to assist with the safe passing of emergency services.

Traffic Light Operation for Egress

Traffic lights will be deployed at the A46 junction with A433 and at the pedestrian crossing outside Worcester Lodge, both sets will be manually operated with priority changing as needed through the ingress and egress

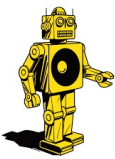
Temporary Speed Limited

A Temporary speed limit will be installed along the A433 with 30 mile per hour repeaters along the route



Routing Strategies





Ingress Flow Strategy

Phases will be triggered by car parks becoming full and/or the flow of traffic on each entry route. Where multiple car parks are open coming in from the same entrance, a CSAS operative will be placed at the junction of the A46/ A433, to filter evenly between each car park (e.g., 50 to Green, 50 to Yellow) as and when new car parks are opened and filtered to. Through the use of radio communication, these filters can be adjusted dependent on flow and remaining capacity.

Contingency for Tetbury will be open throughout as Red Car Park

Blue will be kept open throughout

Space will be reserved in Blue for Coaches

The Green & Blue Route will be One Way from Ragged Castle Lane to the A433 Junction of Holly Bush Lane towards the event site.

Phase 1

Cars From Swindon/ Bristol- Cars will be routed along A46 towards yellow car park, turning right on A46 on to Starveal Lane, left into the Yellow, Car Park entrance.

Cars from the north of the site towards Stroud will be routed along the A46 turning left on A46 on to Starveal Lane, left into the Yellow, Car Park entrance.

Cars from Tetbury will be routed along A433 turning right into Red Car Park

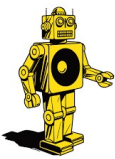
Coaches, VIP, PUDO, Accessible Parking will be routed along the A433 turning into Ragged Castle Lane and following signage to their destination.

Phase 2

Cars From Swindon/ Bristol- Cars will be routed along A46 at A433 junction they will be routed right on A433 then right on ragged castle lane following signage to green car park.

Cars from the north of the site towards Stroud will be routed along the A46 turning left on A46 on to Starveal Lane, left into the Yellow, Car Park entrance.

Cars from Tetbury will be routed along A433 turning right into Red Car Park



Coaches, VIP, PUDO, Accessible Parking will be routed along the A433 turning into Ragged Castle Lane and following signage to their destination.

Phase 3

Cars From Swindon/ Bristol- Cars will be routed along A46 at A433 junction they will be routed past the main entrance and into the Red car park entrance filling both Yellow and Red car parks.

Cars from the north of the site towards Stroud will be routed along the A46 turning left on A46 on to Starveal Lane, left into the Yellow, Car Park entrance.

Cars from Tetbury will be routed along A433 turning right into Red Car Park

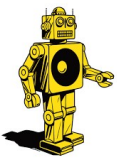
Coaches, VIP, PUDO, Accessible Parking will be routed along the A433 turning into Ragged Castle Lane and following signage to their destination.

Egress Flow Strategy

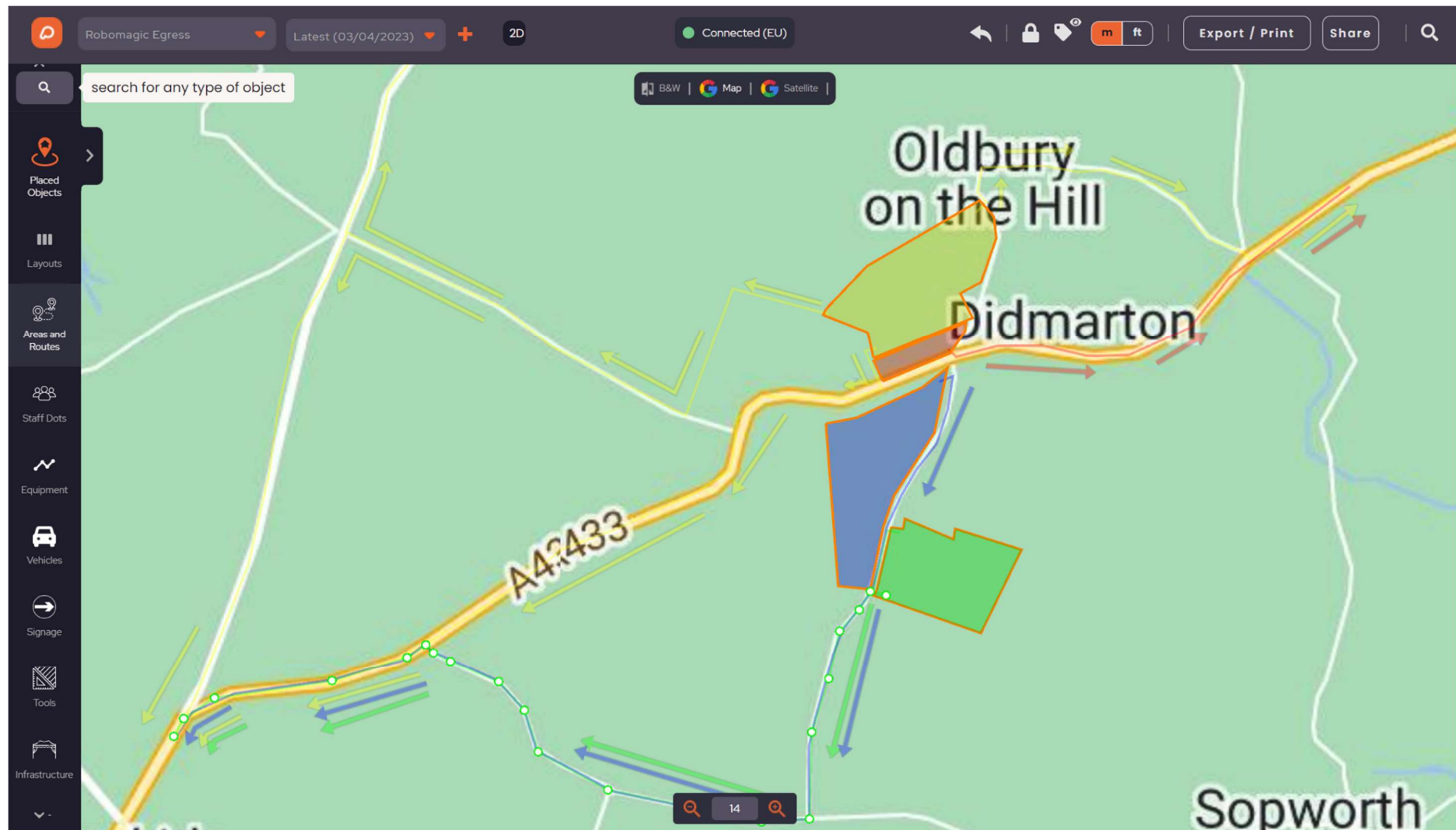
For egress Stadium will utilise Three main exits:

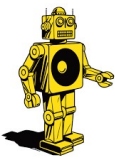
- Red Car Park Exit – Utilising Traffic management Operatives we will flow the red car park Left on A433 towards Tetbury.
- Green Exit – Utilising Traffic management Operatives we will flow the Blue/Green/Production/ car parks out onto Holly Bush Lane, Ragged Castle Lane, Left on A433 then towards A46.
- Yellow Exit 1 - Utilising Traffic management Operatives we will flow the Yellow Right on Starville Lane then left or right on to A46.
- PUDO Collection will be routed to the North of Holy Bush Lane with A433 where they will be able to access the Blue Car Park

Note The Green & Blue Routes will switch direction for egress VIA a one-way system to allow a faster egress.



Egress Flow Map





Car Park Management Overview

Management of the car parks on site will be key to ensuring that the local road network is not adversely affected by the event.

Below are outlined the car parking areas, car park flows and strategies for both ingress and egress.

General notes on the car park management as follows:

At the start of each day a full electronically recorded pre-event evaluation site walk, which will allow each manager to check areas for suitability of parking due to damage from inclement weather, parked cars etc. Any actions from this will be fed back to The Event Umbrella venue representative. Any corrective measures (coning off areas of waterlog etc.) will be conducted before opening the car parks to customers.

All staff will undergo online bespoke training for Badminton House. This will include Stadium's own Customer Service training module as well as site specific information module. And a collaboratively built module on Badminton House and how we deal with Robomagic Live customers.

All cars will be directed to site with external bespoke chapter 7/8 conforming yellow directional signage based on a signage plan agreed with both the For and signed off by Gloucestershire & Wiltshire Highways department.

The signage plan will include specific routing for blue badge holders, VIP parking, drop-offs/pickups coaches and emergency access. All plans will be agreed in advance before manufacture and all signs will be checked in liaison with The Event Umbrella, local Police and local authorities before Stadium's installation on the networks.

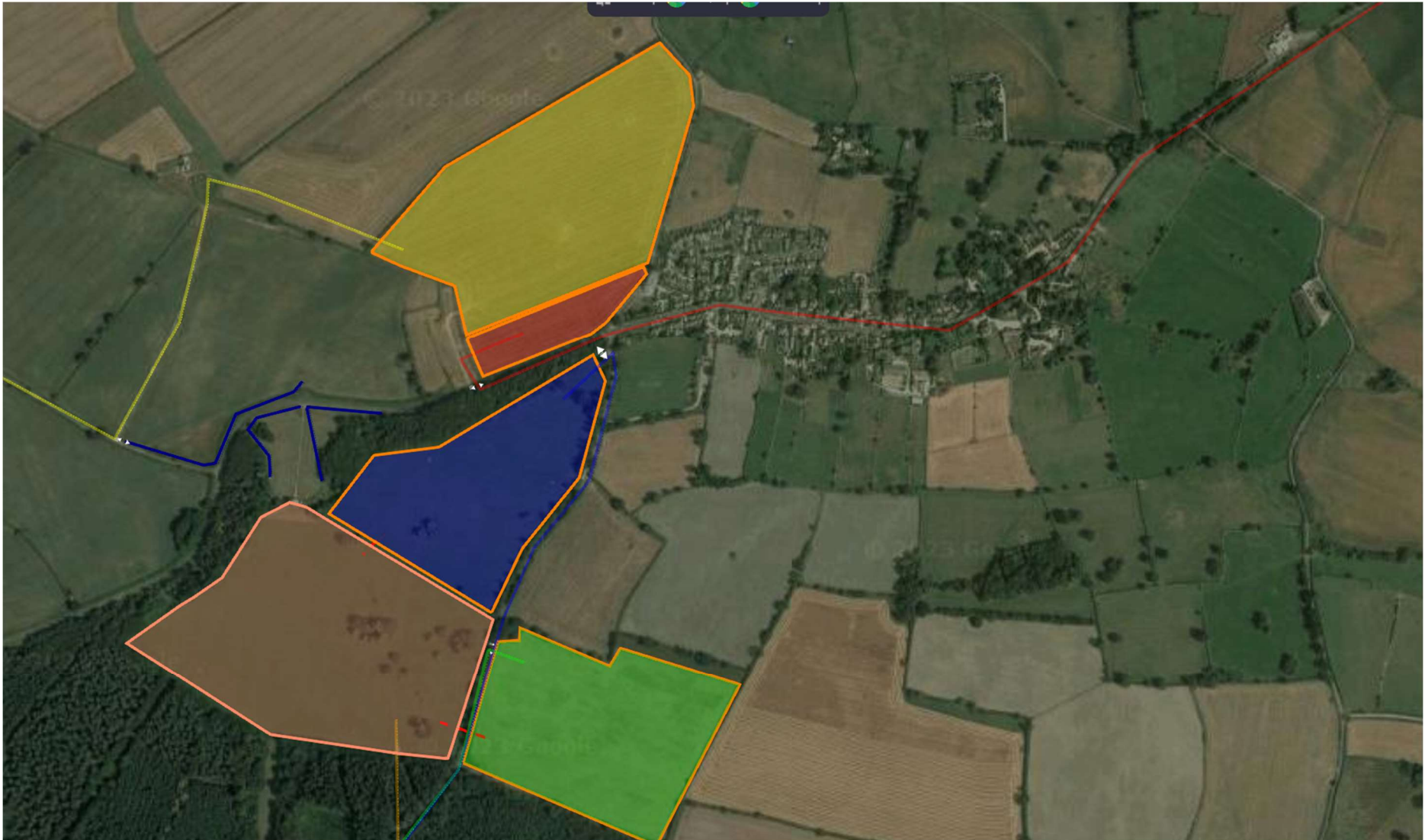
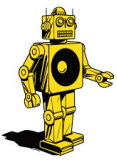
All cars will be directed once onsite into an appropriate car park space through the use of internal directional signage and active car park operatives.

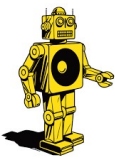
Stadium will use a simultaneous multiple loading method of car parking to ensure cars are not delayed by the speed of the parking, allowing for the cars to flow into the areas and not queue on the highway's networks.

Cars will be parked in pre-designed rows known as 'Singles' and "Doubles". Each car will be able to exit from either in front of it, or behind it. In between each row there will be a 6-metre gap 'gangway' to allow for cars to exit throughout the parking period.

All bottleneck areas where multiple gangways meet will be managed by a car park operative to allow for equal access/egress to the entry/exit point.

Areas of grass affected by inclement weather will be marked off until they are suitable again. And The Event Umbrella will be updated if there is a capacity issue caused by this.





Car Park Capacities & Types

Car Park Name	Type	Capacity	SQM
Red	Grass	947	21054 SQM
Yellow	Grass	6081	135137 SQM
Green	Grass	4461	99140 SQM
Blue	Grass	2158	471957 SQM
	Total	13647	

Stadium calculate car park capacities at 20sqM per car inclusive of an exit width -10% of capacity to account for paths and roadways.

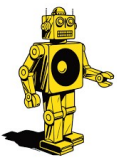
Car Parks will be loaded evenly as we have discussed, we operate a ratio of (Capacity/ 3.4) this means we need a maximum car park capacity of 5882. We are also aware that due to the nature of the events a high portion will use Taxi and Pick up drop off due to the sale of alcohol.

Car Parks will be laid out using Pins and car park tape or rope, capacities will be analyzed on a day-by-day basis with car park counts done every day.

Oldbury Lane

It has been agreed that cars will not be parked within 50M of the houses on Oldbury Lane, car park equipment will be used to ensure the back is kept as a road way for egress.

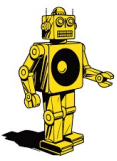
The 50M measurement can be seen below:



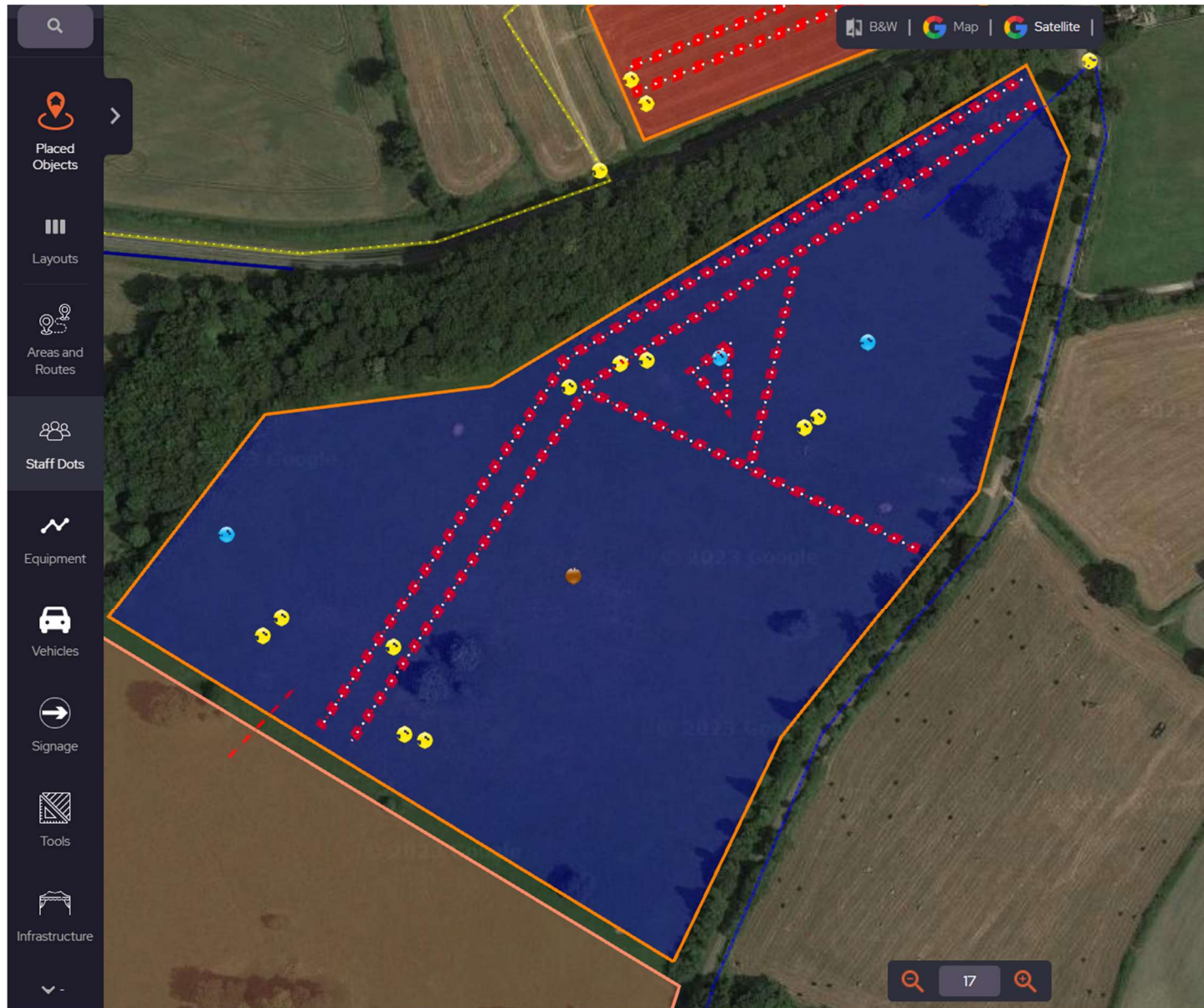
Parked cars will be faced away from the houses in the direction of the A46, this will also assist egress.

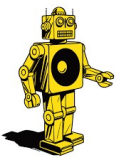
Pedestrians will be directed towards Worcester Lodge Venue and not towards Oldbury Lane

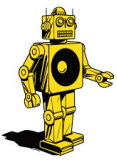
Car Park Staffing Maps



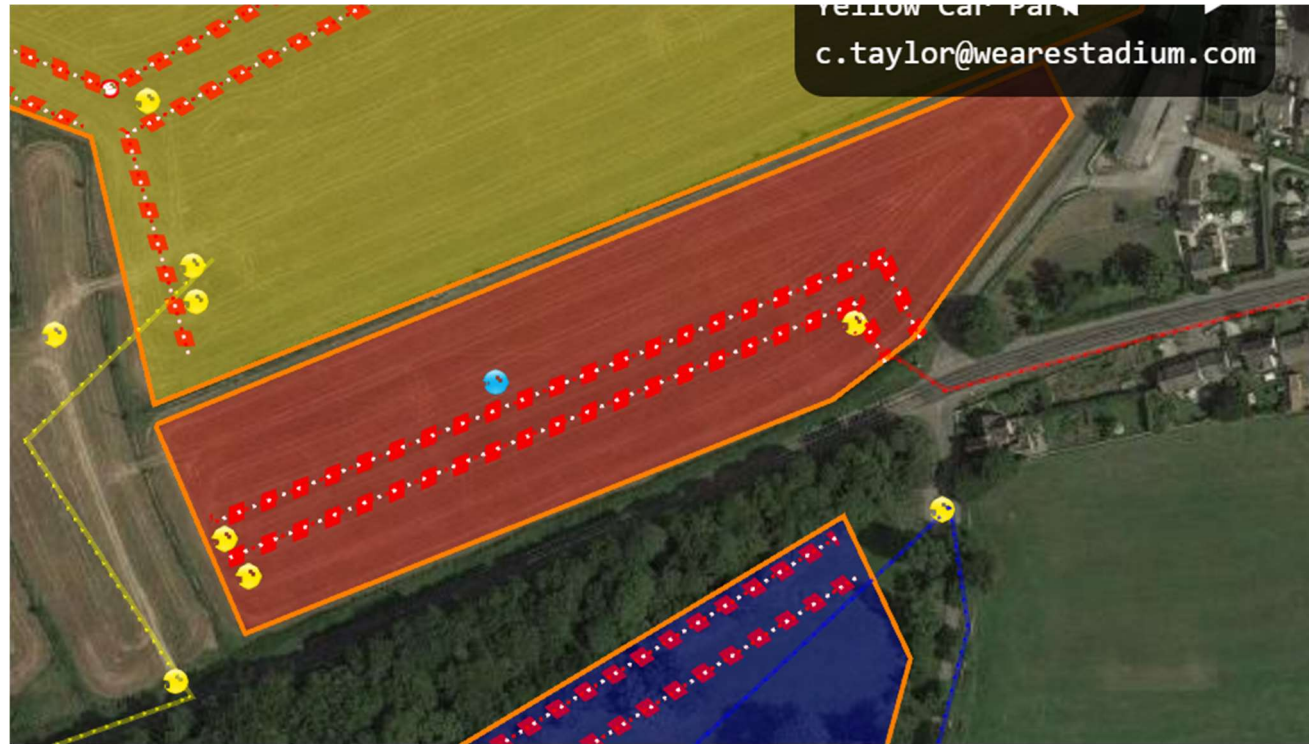
Robomagic Live-Badminton Estate -Traffic Management Plan

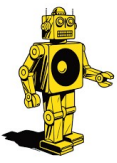






Robomagic Live-Badminton Estate -Traffic Management Plan

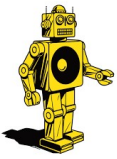




Robomagic Live-Badminton Estate -Traffic Management Plan



Yellow Car Park



Yellow Car Park

1 Manager

1 Supervisor

14 Car Park Attendants

Red Car Park

1 Supervisor

3 Car Park Attendants

Green Car Park

1 Manager

1 Supervisor

4 Car Park Attendants

Blue (Accessible VIP & Coach) Car Park

1 Manager

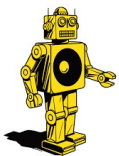
1 Supervisor

6 Car Park Attendants

TAXI PUDO INGRESS

1 Supervisor

2 Car Park Attendants



Directional Staff from A433 & Ragged Castle Lane

1 TMO

Directional Staff from A46 to A433

1 TMO

Directional Staff from A46 to Starville Lane

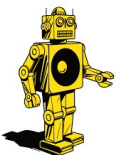
1 TMO

Directional Route from A433 to Red Car Park

1 TMO

Directional Route from Holly Bush Lane to Blue Car Park

1 TMO



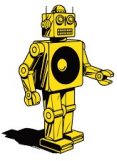
Egress Capacities

Car Park Name	Type	Exits	Lanes	Exit in M	Total Estimated Cars	Exit Time	Type Of Exit
Red	Grass	1	1	3M	600	1 Hour	Managed Road
Yellow	Grass	3	5	6M & 6M & 3M	3500	1hr 10 Minutes	Managed Road
Green	Grass	1	1	3.8M & 3M	1500	1 Hr 15 Minutes	Managed Road
Blue	Grass	1	1	3M	800	1hr 20 Minutes	Managed Road
	Total	6	8		6600		

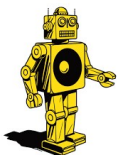
Car Park exiting on to live roads is calculated at 500 cars per hour 8.3 per minute per lane.

Car park exiting on to closed roads is calculated at 800 cars per hour 13.3 per minute per lane.

Car park exiting on to traffic managed roads is 600 per hour 10 cars per minute per lane.



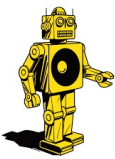
Name	Image	Notes
Blue Car park exit.	 A photograph showing a silver car parked on a grassy area next to a dirt path. A dark car is partially visible on the right. The background shows a green field and trees.	
Green Car Park Exit 1	 A photograph of a dirt path leading through dense green trees and bushes. The path is slightly overgrown with grass.	<i>To be redeveloped as entrance</i>
Green Car Park Exit 2	 A photograph of a dirt path leading through dense green trees and bushes. The path is slightly overgrown with grass.	<i>To be redeveloped as entrance</i>



Robomagic Live-Badminton Estate -Traffic Management Plan



Yellow Car Park Exit 1		<i>To be widened to 6M</i>
Yellow Car Park Exit 2		<i>Trees to be cut back.</i>
Yellow Car Park Exit 3		



Red Car Park Exit 1			
----------------------------	------------------------------------------------------------------------------------	--	--

Car Park Venue Strategy

At approximately 15:30hrs the car parks will be opened to the concert visitors. External traffic management signage will direct all public vehicles to enter the site via the approved entrances for each event. Stadium staff will be positioned at key points around the site and within the car parks to ensure motorists are given clear instructions on how to reach their parking area and are parked in an orderly fashion.

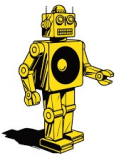
Yellow Route

Vehicles travelling from Bristol or Swindon will be directed along the A46 and then routed right along Starville Lane, Starville lane will be a one way to allow a faster access to the event car parks, the main event car park (yellow) will have a dual lane entrance.

Green & Blue Route

A second event day car park (green) is available to manage the ingress, this will be routed right on the A46 at the junction of the A433, traffic will then be directed right on to Ragged Castle Lane, where they will follow directional signage to the green car park entrance on Holly Bush Lane.

We do not anticipate high levels of coach travel, if we do have Coaches, they will be directed by the External Traffic Management signage into the blue car park along Ragged Castle Lane & Holly Bush Lane. This area has enough capacity for up to twenty coaches.



All Accessible Parking, Blue badge holders, heavily pregnant customers will be directed to the blue car park which is a lot closer to the event grounds and will be a short walk to the event.

Production Traffic will also follow the green route and will have a separate entrance along Holly Bush Lane.

VIP parking will follow blue route parking in the blue car park.

Big Green Coach Company

We anticipate 4-8 coaches for each show from Big Green Coach Company-. *All coaches are due to arrive around 15:30 (traffic dependant) and are scheduled to depart at 23:45 (11.45pm).*

Big Green Coach is the largest events travel company in the UK. We work with more festivals and gigs than anybody else in the UK. You know that you are in safe hands.

We are the OFFICIAL and EXCLUSIVE coach partner to most major festivals such as: Boardmasters, Creamfields, Download, Isle of Wight Festival, Latitude, Leeds, Parklife, Reading and Wireless - plus lots more. We are also the Official Transport Provider to Tottenham Hotspur FC.

We love music, take great pride in taking our passengers to the greatest events in the UK and Europe and do all we can to make your experience with us as easy and simple as possible from booking tickets, collecting your festival tickets and travelling on our services.

Big Green Coach also takes thousands of people to abroad via our European services. If you fancy amazing festivals such as Outlook, Hideout, Tomorrowland, Rock Werchter or Pukkelpop check our European events.

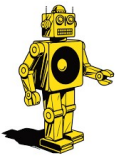
Red Route

The red route will be for any traffic travelling from Tetbury, we do not anticipate this route to be heavily used and a separate Red car park is designated off the A433.

Accessible Parking

Sufficient car park directional signage will be in place to direct customers with accessible needs to the below car park.

Dedicated Taxi and General Drop Off/Pick Up Point



Robomagic Live-Badminton Estate -Traffic Management Plan

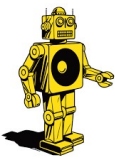


The drop off/pick up point will follow the routing to Blue Car park. The layout of this area will be divided into two sections (General and Taxis). On Ingress vehicles will be able to drop off in the predesigned lanes. On egress stacking areas will be designated to allow for pedestrians to embark.

This allows for dedicated and signed points that all can utilize. While keeping this flow of traffic away from the ingress and egress. Therefore, Stadium can utilize a tidal flow modal on entry and exit.

They then make their way around the car park designated drop off section, drop off leave via the exit as shown.

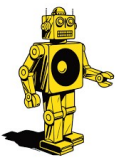
Sufficient staff will be in place to manage both pedestrian queueing and taxi loading, a separate area will be laid out for pick up and drop offs, we do not anticipate a queue for these guests but, if necessary, a holding area for pedestrians will be identified to stop member of the public walking around the drop off zone. All cars will follow the same route until the decision point where car park staff will direct traffic the right way (black cabs or other).



Staffing Strategy

The following staffing levels (including the taxi / PHV operations) are deemed necessary to deliver the clients requirements:

Traffic Management Team					
Date	Operation	Traffic Management Operative	Timings	Hours	Total Hours
28/06/2023	Car Park Set Up		2 09:00-17:00	8	16
29/06/2023	Car Park Set Up		2 09:00-17:00	8	16
30/06/2023	TM Pre Lay		2 09:00-17:00	8	16
30/07/2023	Operations Manager		1 09:00-17:00	8	8
01/07/2023	Operations Manager		1 09:00-17:00	8	8
01/07/2023	Final Preparations		2 09:00-17:00	8	16
02/07/2023	LIVE- CSAS		4 09:00-17:00	8	32
02/07/2023	LIVE- Response Team		2 09:00-17:00	8	16
02/07/2023	LIVE-Sigange Team		2 09:00-17:00	8	16
02/07/2023	LIVE- Traffic Light Operatives		2 09:00-17:00	8	16
03/07/2023	Removal of Equipment		2 09:00-17:00	8	16
04/07/2023	Removal of Equipment		2 09:00-17:00	8	16
12/07/2023	Car Park Set Up		2 09:00-17:00	8	16
13/07/2023	Car Park Set Up		2 09:00-17:00	8	16
14/07/2023	TM Pre Lay		2 09:00-17:00	8	16
15/07/2023	Final Preparations		2 09:00-17:00	8	16
14/07/2023	Operations Manager		1 09:00-17:00	8	8
15/07/2023	Operations Manager		1 09:00-17:00	8	8
16/07/2023	LIVE- CSAS		4 09:00-17:00	8	32
16/07/2023	LIVE- Response Team		2 09:00-17:00	8	16
16/07/2023	LIVE-Sigange Team		2 09:00-17:00	8	16
16/07/2023	LIVE- Traffic Light Operatives		2 09:00-17:00	8	16
17/07/2023	Removal of Equipment		2 09:00-17:00	8	16
18/07/2023	Removal of Equipment		2 09:00-17:00	8	16



Robomagic Live-Badminton Estate -Traffic Management Plan



Car Park Team								
Date	Operation	Car Park Manager	Supervisor	Car Park Attendant	Timings	Hours	Total Hours	
02/07/2023	Operations Manager		1		09:00-21:00	12	12	
02/07/2023	Green Car Park		1		09:00-21:00	12	12	
02/07/2023	Green Car Park			1	09:00-21:00	12	12	
02/07/2023	Green Car Park				4 09:00-21:00	12	48	
02/07/2023	Blue Car Park		1		09:00-21:00	12	12	
02/07/2023	Blue Car Park			4	09:00-21:00	12	48	
02/07/2023	Blue Car Park				20 09:00-21:00	12	240	
02/07/2023	Accesible/ VIP Car Park		0		09:00-21:00	12	0	
02/07/2023	Accesible/ VIP Car Park			1	09:00-21:00	12	12	
02/07/2023	Accesible/ VIP Car Park				2 09:00-21:00	12	24	
02/07/2023	Coach Park		0		09:00-21:00	12	0	
02/07/2023	Coach Park			1	09:00-21:00	12	12	
02/07/2023	Coach Park				2 09:00-21:00	12	24	
02/07/2023	PUDO		1		09:00-21:00	12	12	
02/07/2023	PUDO			1	09:00-21:00	12	12	
02/07/2023	PUDO				4 09:00-21:00	12	48	

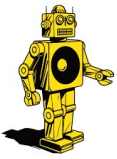
Each day we have an early team on site from 09:00-15:00 to manage production, Worcester Lodge general guests and queries, their focus is to protect all car parks from fly parking.

The Stadium Internal Operations Manager will arrive on site at approximately 12:00hrs on each concert day.

On all concert days the Supervisors will arrive on site at 14:00hrs. They will be given a detailed walk around of their areas of responsibility and the site by the Stadium Operations Managers to ensure they are fully orientated with the operation. They will also be given a detailed briefing covering relevant event information, health and safety and emergency evacuation measures.

From 14.30hrs the staff will arrive on site at which time the Operations Managers will issue a collective briefing to all the staff detailing the information relevant to the event, their primary roles and responsibilities, health and safety considerations and any emergency evacuation procedures. Following the briefing the Supervisors will take the staff to their areas where they will issue them a specific on position briefing.

We have sufficient staff to manage all areas of the operation.



Robomagic Live-Badminton Estate -Traffic Management Plan



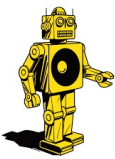
Set Up Day 1- The first part of the day will be spent unloading and organising our equipment. We then plan to lay out the External Traffic Management signage around the local area.

Set Up Day 2- The team will focus on laying out all car parks with equipment.

Event Day 1- any finishing touches will be done early on the first event day including lifting car park tape and rope.

Break Down Days- all equipment will be removed from site, any The Event Umbrella signage will be returned to event control at the end of the day, any car park tape will be re-used at other events to ensure sustainability. Load out at Worcester Lodge Production Exit will be Monday & Tuesday. There is a high risk of vehicle/pedestrian conflict as Monday will be busy with visitors, so good vehicle flow management is needed.

2 additional staff will be specifically positioned to manage this from 09:00-17:00 each breakdown day.



Contingency Planning

Management team will be a part of all venue planning for resilience contingency.

In the event of severe weather and the car parks get waterlogged.

In the event of adverse weather, an assessment each morning in the lead up to the event will be completed the car parks will be graded for the use of car parks:

Level 1- Good dry conditions – no foreseen issues.

Level 2- Recent Wet Weather but fields in good condition.

Level 3- medium wet weather, some areas of field unusable additional assistance to ingress and egress required.

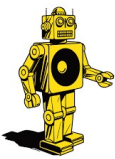
Level 4- Heavy wet weather, delays expected to ingress and egress, some areas of each car park closed off, tractor & 4x4 required for some towing. Entrance and exits will have excessive mud and require additional support.

Level 5- one or more car parks closed due to excessive water logging- possible show stop due to capacity of car park issue. Entrance or exits compromised.

If this happens before the ingress, we will tape off the area and park vehicles in areas that have not been affected too badly. If this happens on the egress, we will have a 4x4 on standby and will help anyone needing the help to be pulled out.

It is noted that a separate Adverse Weather plan created by the event organiser is available under: **APP N: BEC 2023 Adverse Weather Protocols**, an extract from that document is below:

Transport will assess the impact of adverse weather on road conditions, public transport, walk and trackways. Sandbags, plastic coverings, continuous clearing of walk and trackways are planned should weather pose a risk to workers and/or attendees.



Impact on available parking is another significant risk in terms of heavy rain. The EOT will work with the Badminton Estate (Venue Owner) to identify back up locations. It should be noted that the car parks themselves are used for events such as the horse trials and have a proven track record of excellent drainage and have not been compromised previously. The traffic management company will employ VMS to direct traffic away from car parks, should they become compromised.

At the time of writing (4 April 2023) the Badminton Estate is undertaking a risk assessment to ascertain the risk of flooding to the car parks. The results of this RA will be reflected in the contingency plans in the event of a car park becoming unusable.

Road Traffic Collision on Highways

If this was the happen, we would place cones around the area and place traffic management team in the area to help with the traffic flow and would call any emergency services. We would make event control aware and ask for first aid if needed until the emergency's services arrive.

Road Traffic Collision inside the venue

If we do have a bump in the carpark, we would direct traffic away from the area and we would help the driver change details and make event control aware of this.

Emergency services coming on to site.

When emergency services need to have access if event control make us aware of this, we would have all staff on standby when emergency vehicles are seen we would hold all traffic and allow them in with a clear route.

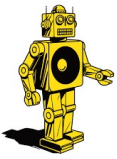
Car parks reaching capacity.

In the event of all car parks being full we would use an area in the pickup and drop off point. Still allowing room for pick up and drop off not being affected.

Missing child in the car park

If we discover a missing child in the carpark, we will let event control know and we stay make sure the is two members of staff with the child and would stay in the location where we were.

Event Cancelled



If in event of the event being cancelled, we would place staff on the entries of all carparks and advice all public that the event had be cancelled.

Staff no show.

In the event of staff, no show the manager will be staying local to the event and will be able to come to site and able to help in the carparks until the staffing team are able to redeploy more staff to the event.

Stadium will plan to overbook staff up to 10% to ensure resilience in the workforce.

TTRO Applications

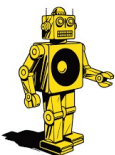
Traffic Mapping should be viewed in conjunction with the below plans.

Event Signage

Permission for event directional signage will be sought for:

- A46
- A433
- Starveal Lane
- Ragged Castle Road
- Holly Bust Lane
- Sopworth Village

Applicable from 07:00 Wednesday 28th June 2023- 07:00 Wednesday 19th July 2023



Speed Limits

- A 30mph speed limit will be applied for the A433 with the junction of A46 to the existing 30mph speed limit 200M from the entrance to Didmarton.
- A 30mph speed limit will be applied for the Holly bush lane with A433 to the junction of Ragged Castle Road
- A 30mph speed limit will be applied for the Ragged Castle Road with A433 to the junction of Holly Bush Lane

Applicable from 07:00 Sunday 2nd July 2023- 03:00 Monday 3rd July 2023 & 07:00 Sunday 16th July 2023- 03:00 Monday 17th July 2023

No Waiting

A no waiting order will be applied for:

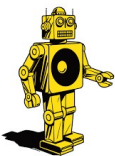
- A46
- A433
- Starveal Lane
- Ragged Castle Road
- Holly Bush Lane
- Sopworth Village

This will be supported by verge protection & no waiting cones.

Applicable from 07:00 Saturday 1st July 2023- 07:00 Monday 3rd July 2023 & 07:00 Saturday 15th July 2023- 07:00 Monday 17th July 2023

Temporary Traffic Lights

- 3 way temporary manually controlled traffic lights will be deployed on the A46 junction of A433 for ingress and egress management.



Robomagic Live-Badminton Estate -Traffic Management Plan



- 2 way temporary manually controlled traffic lights will be deployed on the A433 junction of Worcester Lodge to manage the safe crossing of pedestrians pre and post event.

Applicable from 14:00 Sunday 2nd July 2023- 03:00 Monday 3rd July 2023 & 14:00 Sunday 16th July 2023- 03:00 Monday 17th July 2023

One Way System

- A one-way system will be applied for the Holly bush lane with the junction of the Didmarton Village Hall (144M) to the junction of Ragged Castle Road. Two-way traffic will run from the junction of A433 to the Didmarton village hall entrance. this will be reversable for ingress and egress.
- A one-way system will be applied for the Ragged Castle Road with A433 to the junction of Holly Bush Lane. this will be reversable for ingress and egress.
- A one-way system will be applied for Starville Lane with the junction of A46 to the junction of A433, this will be reversable for ingress and egress.

Applicable from 07:00 Sunday 2nd July 2023- 03:00 Monday 3rd July 2023 & 07:00 Sunday 16th July 2023- 03:00 Monday 17th July 2023

CSAS

CSAS has been applied to Gloucestershire Constabulary. Stadium is a nationally accredited company under the Community Safety Accreditation Scheme (CSAS). Under this scheme, our operatives can be licensed by any local police force to actively direct and restrict traffic movements on the public highway as a part of your event's traffic management measures.

Applicable from 16:00 Sunday 2nd July 2023- 03:00 Monday 3rd July 2023 & 16:00 Sunday 16th July 2023- 03:00 Monday 17th July 2023